

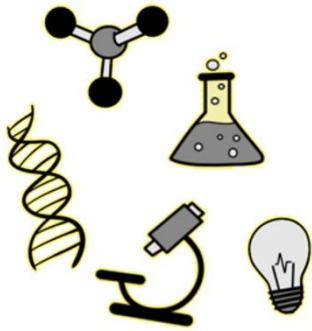
Amoeba Sisters | Video Recap

NAME: _____

Amoeba Sisters Video Recap: *Endosymbiotic Theory*

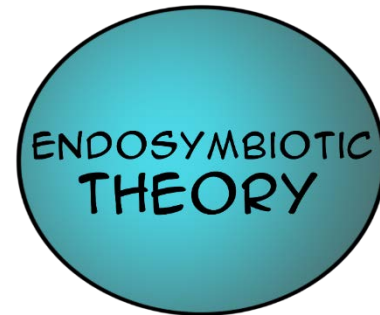
What is a Scientific Theory?

1. The word **theory** in science is very different from how you might use the word in your daily life. A theory is also not the same as a hypothesis. What is **scientific theory**?



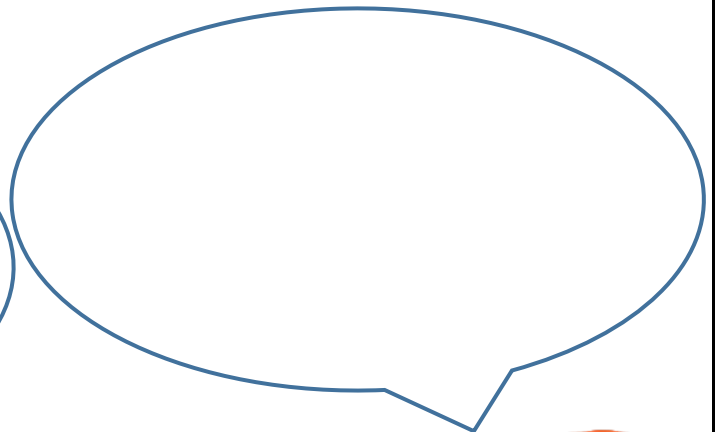
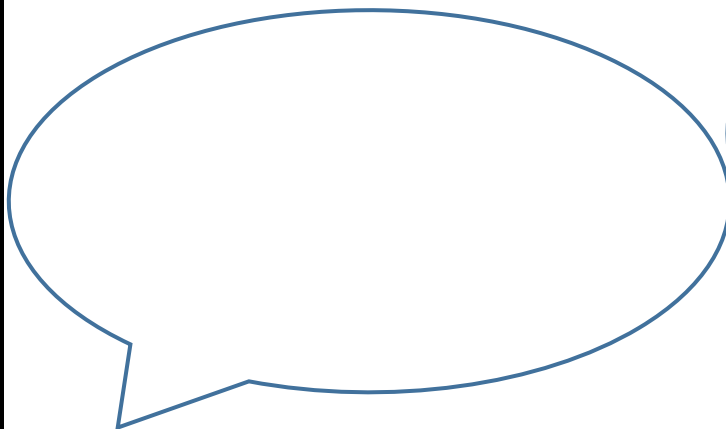
In Under 15 Words...

2. If you were limited to 140 characters in a text to tell what the **endosymbiotic theory** is...could you do it? In 15 words or less, give your best tweet stating what the endosymbiotic theory states.



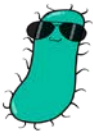
A Prokaryote and Eukaryote Introduction

3. In order to understand the endosymbiotic theory, it is important to understand the difference between modern day prokaryote and eukaryote cells. In the prokaryote (left) and eukaryote (right) speech bubbles, write how these cells would introduce themselves (if they had the ability)!



Amoeba Sisters LLC

© This select handout cannot be posted online publicly as this is a violation of copyright.

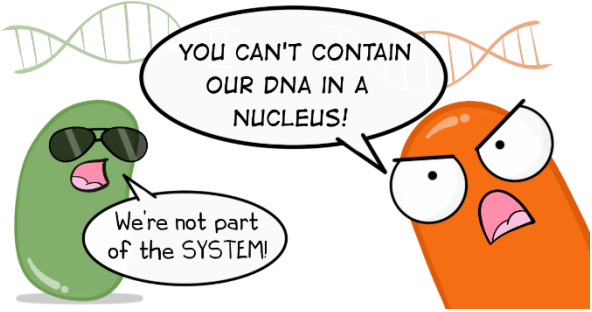
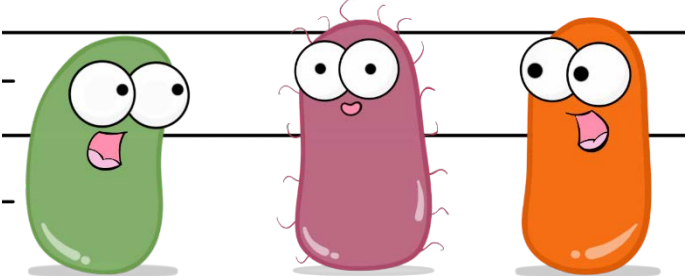
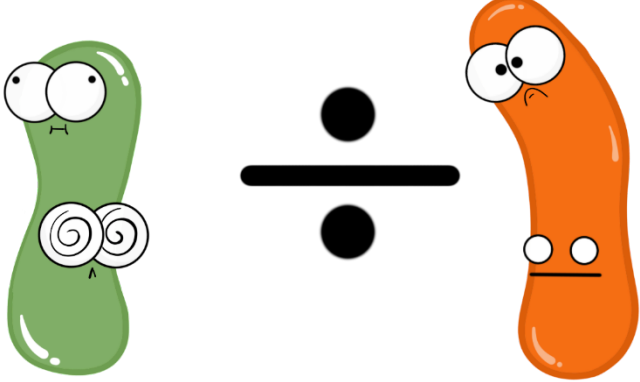


Amoeba Sisters | Video Recap

NAME: _____

Caption It!

Scientific theories must be supported by evidence. The video specifically mentions three facts that can support the endosymbiotic theory. (Please note: there are more that you can explore not included in the video!) These three facts are represented by comics from the video. For each comic, provide a caption that describes the supporting fact. These words must be used at least once in the table below: **mitochondria**, **chloroplast**, **bacteria**.

4.	
5.	
6.	

7. Create a diagram representing endosymbiotic theory. Refer to page 427.