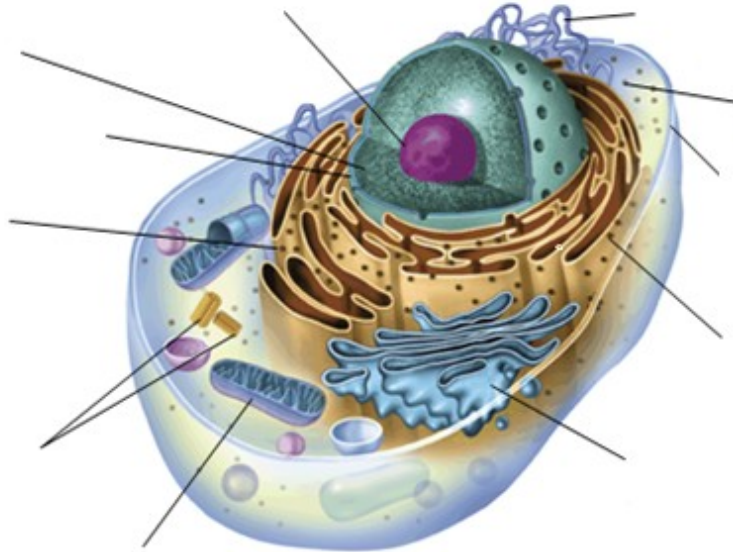
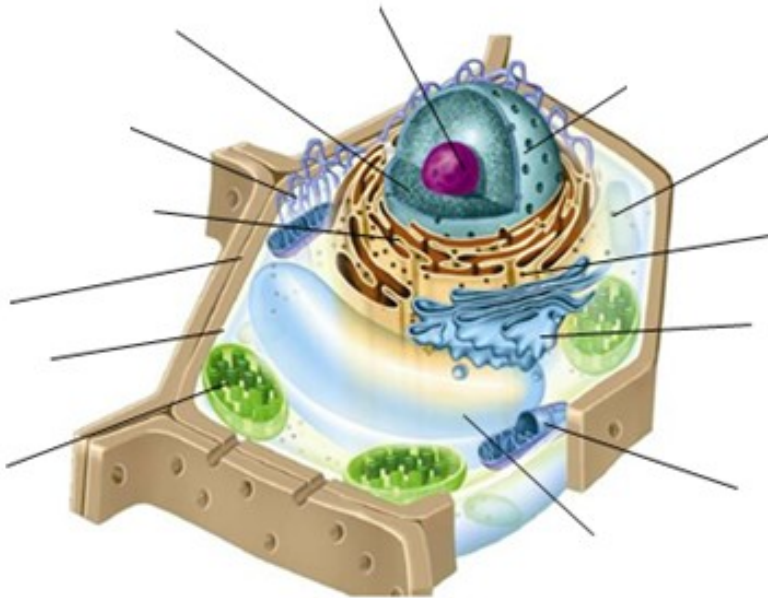


1. Use the diagrams below to label each part of the eukaryotic cells. Each organelle to be labeled has a line coming from it. (pg. 175)

a) Animal Cell



b) Plant Cell



2. On your own piece of paper, indicate what an organelle is and indicate what the job/role of each of the organelles listed below is. It would be a good idea to leave a few spaces between each organelle in case you have to add information to your answer when we review them in class. (use pg. 174 to 181)

Organelles: nucleus, nucleolus, nuclear membrane, ribosomes, smooth and rough endoplasmic reticulum, Golgi apparatus, chromosomes, lysosomes, microtubules and microfilaments, vacuoles, mitochondria, centrioles, chloroplast, cell membranes and cell walls, cilia and flagella.

3. Create a T-chart showing the differences between plant and animal cells.